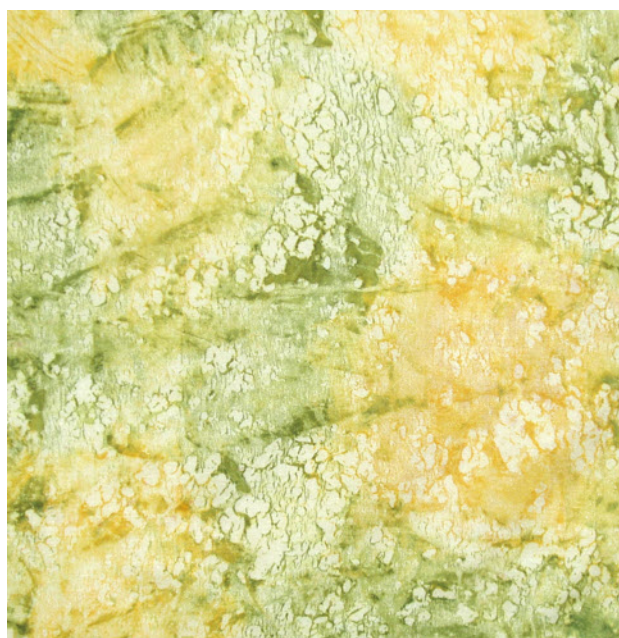
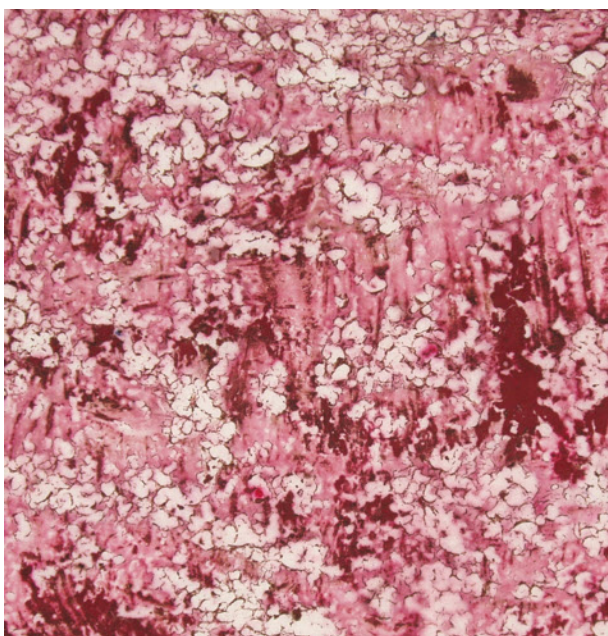


Oatmeal cooked in microwave 3 minutes, handpainted with thickened dye once dry



Oatmeal, uncooked, painted with thickened dye while damp



Oatmeal uncooked, handpainted with thickened dye once dry



Oatmeal, microwave 3 minutes, low water immersion once dry

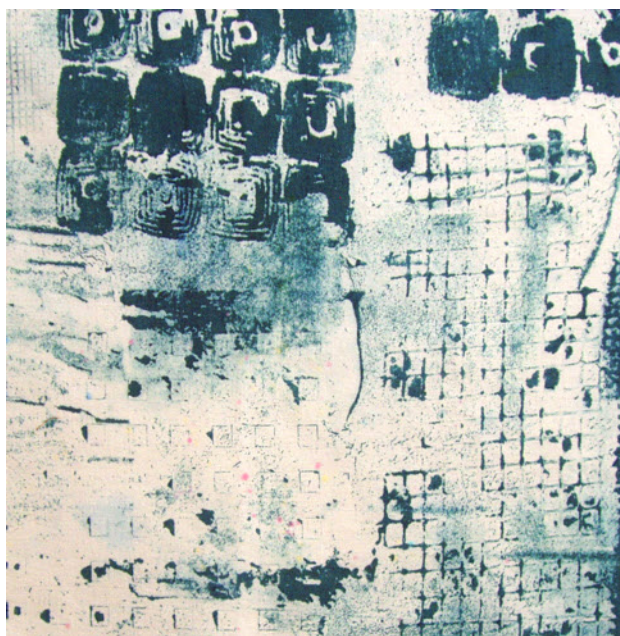
Detailed instructions for using these resists can be found in Quilting Arts Magazine, Issues 48 - 52



Marks made with bamboo skewer, wire whisk, and notched spreader, handpainted with thickened dye once dry



Writing with bamboo skewer, handpainted with thickened dye once dry



Trivet, plastic hardware cloth placed on wet flakes, removed before dry, handpainted with thickened dye once dry



Potato flakes applied with spoon, handpainted with thickened dye once dry

Detailed instructions for using these resists can be found in Quilting Arts Magazine, Issues 48 - 52



Applied with syringe, handpainted with thickened dye once dry, repeated 3 times



Applied with squeegee, handpainted with thickened dye once dry



Applied with squeeze bottle, entire cloth brushed with rice cereal when dry, handpainted with thickened dye once dry



Applied with squeeze bottle, handpainted with liquid dyes once dry

Detailed instructions for using these resists can be found in Quilting Arts Magazine, Issues 48 - 52



Applied with stamp, handpainted with thickened dye once dry



Applied with window chamois, handpainted with liquid dye once dry

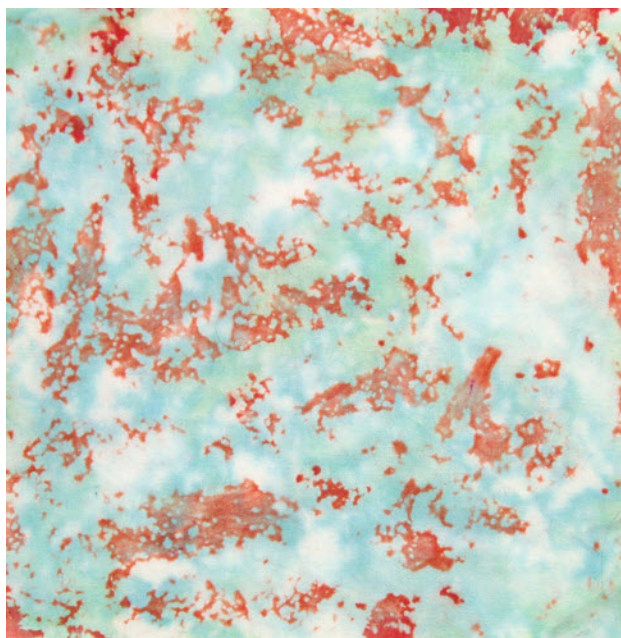


Dripped from spoon, handpainted with thickened dye while wet

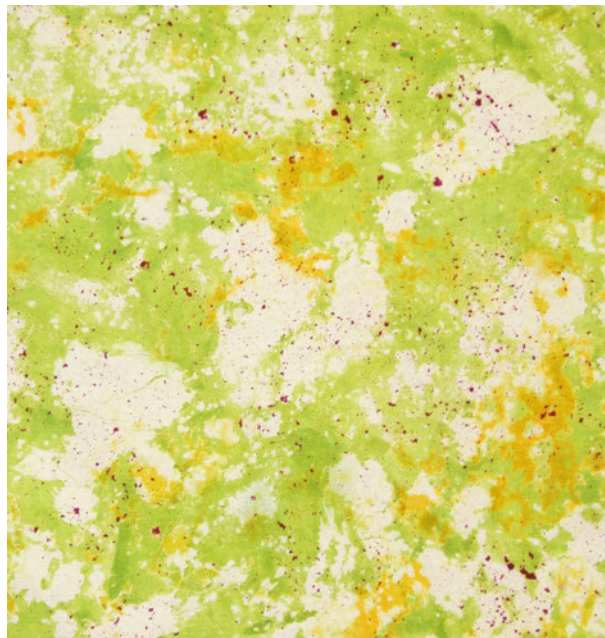


Applied with squeeze bottle, liquid dyes applied with pipette while wet

Detailed instructions for using these resists can be found in Quilting Arts Magazine, Issues 48 - 52



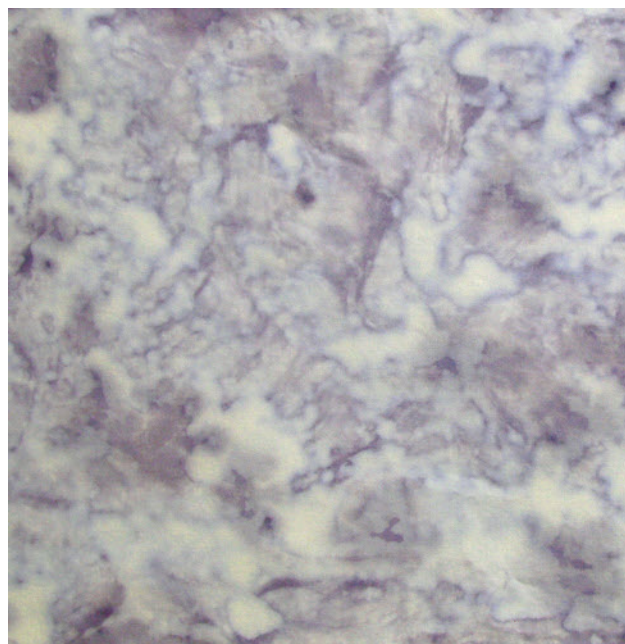
Applied with spoon, painted with liquid dyes while wet, washed, applied with spoon, painted with thickened dyes when dry



Applied with spoon, handpainted with thickened dyes while wet, washed, applied with spoon, painted with thickened dyes when dry



Tapioca allowed to stand 10 minutes without stirring, applied with spoon, handpainted with thickened dye when dry



Applied with spoon, painted with liquid dyes while wet

Detailed instructions for using these resists can be found in Quilting Arts Magazine, Issues 48 - 52